

# CAMBRIDGE 55" CENTER SINK CABINET

# ARIEL

A055S



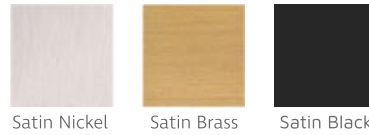
## BASE CABINET DIMENSIONS

54" W x 21.5" D x 34.5" H

## FEATURES

- Solid wood frame & plywood panels
- Dovetail drawers and joints
- Soft closing doors & drawers

## HARDWARE FINISHES



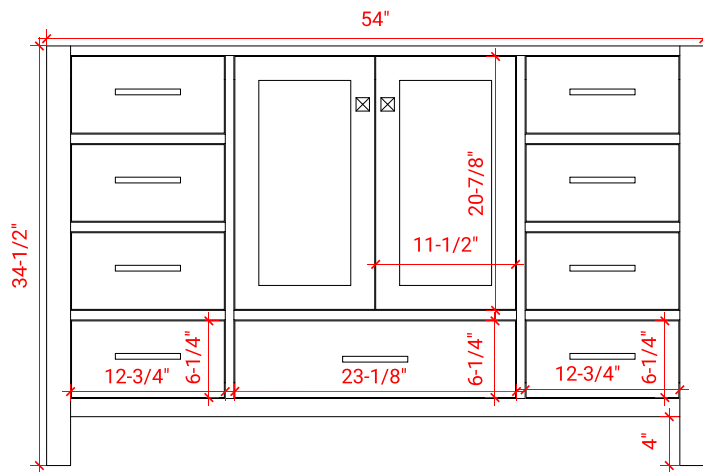
Satin Nickel    Satin Brass    Satin Black

## AVAILABLE COLORS

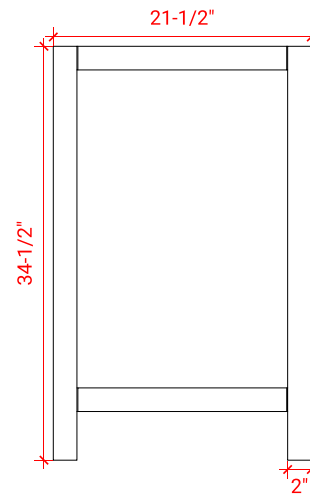


White    Grey    Espresso    Midnight Blue

FRONT VIEW



SIDE VIEW



PLAN VIEW

