

# CAMBRIDGE 73" DOUBLE SINK CABINET

# ARIEL

A073D

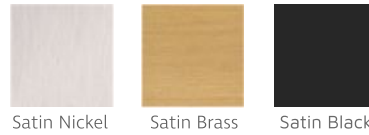
## BASE CABINET DIMENSIONS

72" W x 21.5" D x 34.5" H

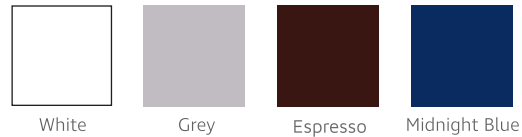
## FEATURES

- Solid wood frame & plywood panels
- Dovetail drawers and joints
- Soft closing doors & drawers

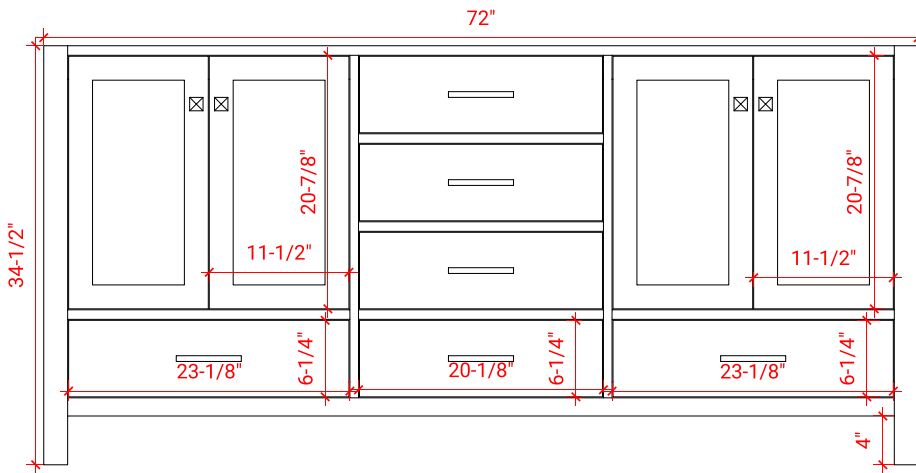
## HARDWARE FINISHES



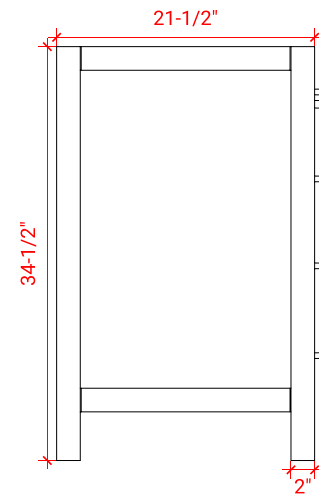
## AVAILABLE COLORS



FRONT VIEW



SIDE VIEW



PLAN VIEW

