

**BASE CABINET DIMENSIONS**

54" W x 21.5" D x 33.5" H

**FEATURES**

- Solid wood frame & plywood panels
- Dovetail drawers and joints
- Soft closing doors & drawers

**HARDWARE FINISHES**



Brushed Nickel    Satin Brass    Matte Black    Polished Chrome

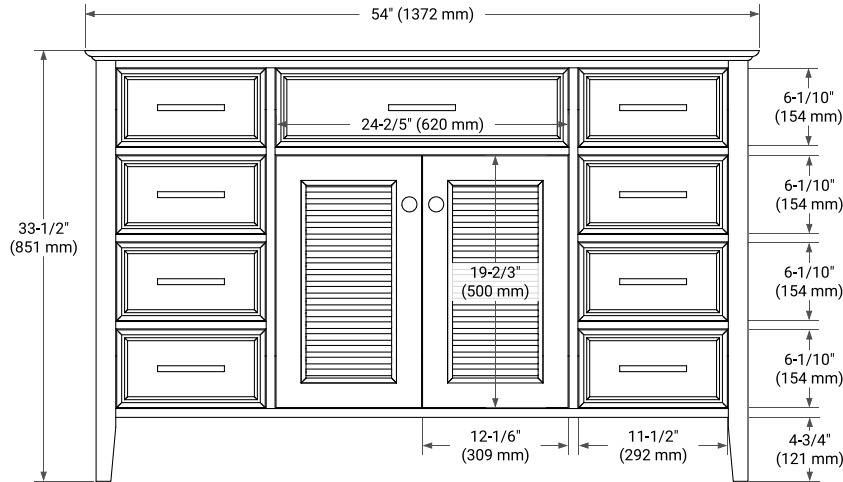
**AVAILABLE COLORS**



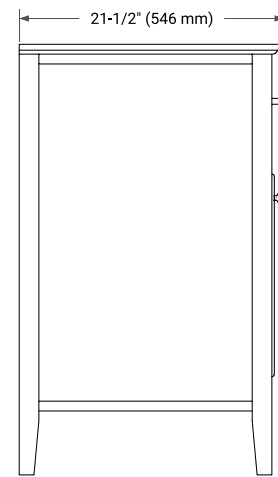
White    Grey



**FRONT VIEW**



**SIDE VIEW**



**PLAN VIEW**

